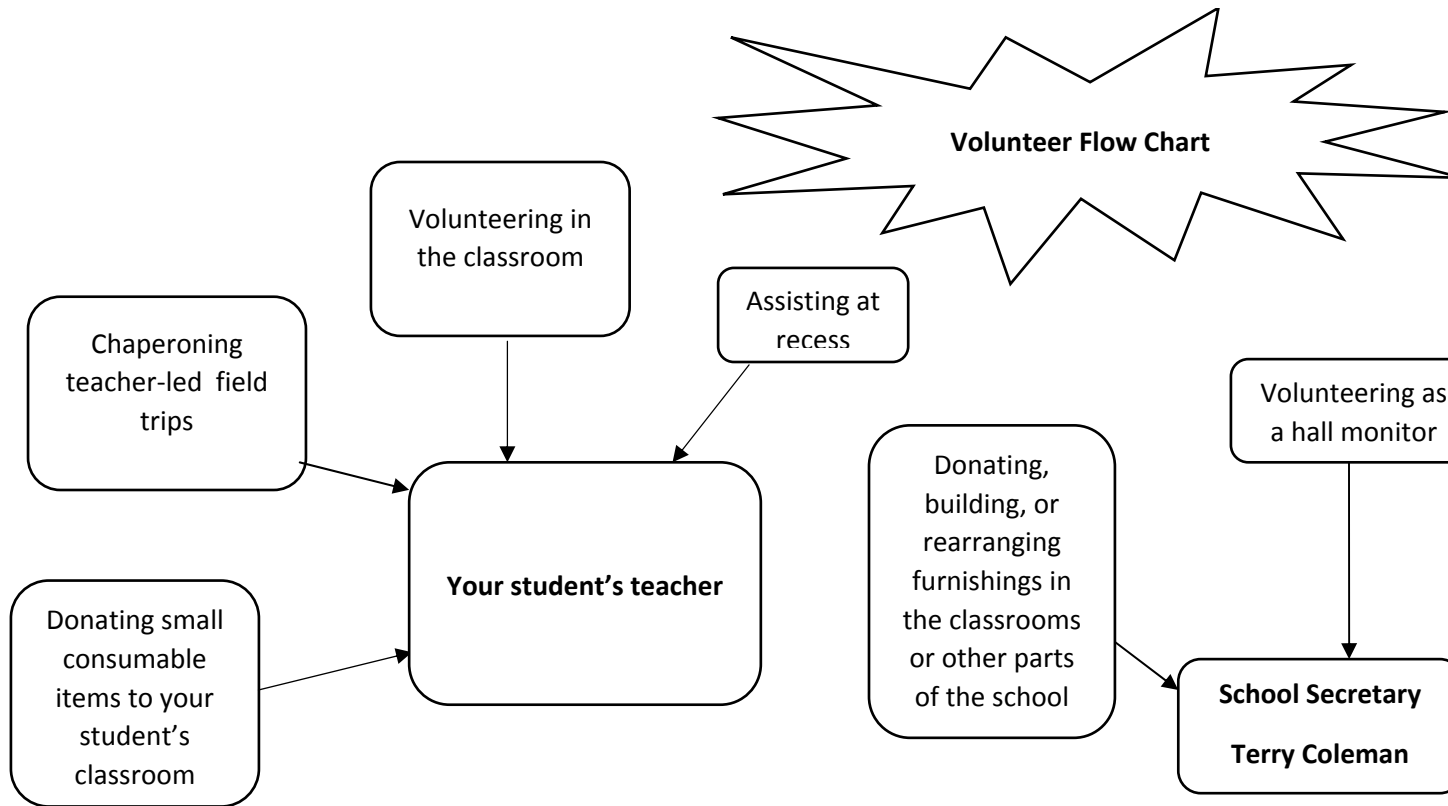
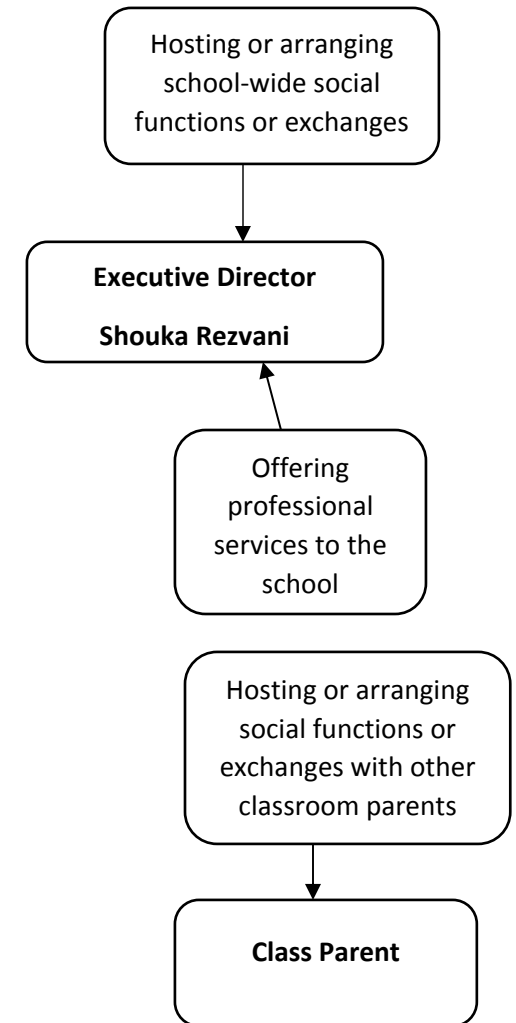


If you have any questions or concerns beyond what is outlined below, please speak to the school secretary



Fundraising: See fundraising chart

Other questions: see general questions flowchart



Executive Director : shouka@lemondeimmersion.org

School Secretary: secretary@lemondeimmersion.org

All volunteers who work in the school with students present must be background checked.

Please see the school secretary to begin this process, and expect it to take a few weeks.