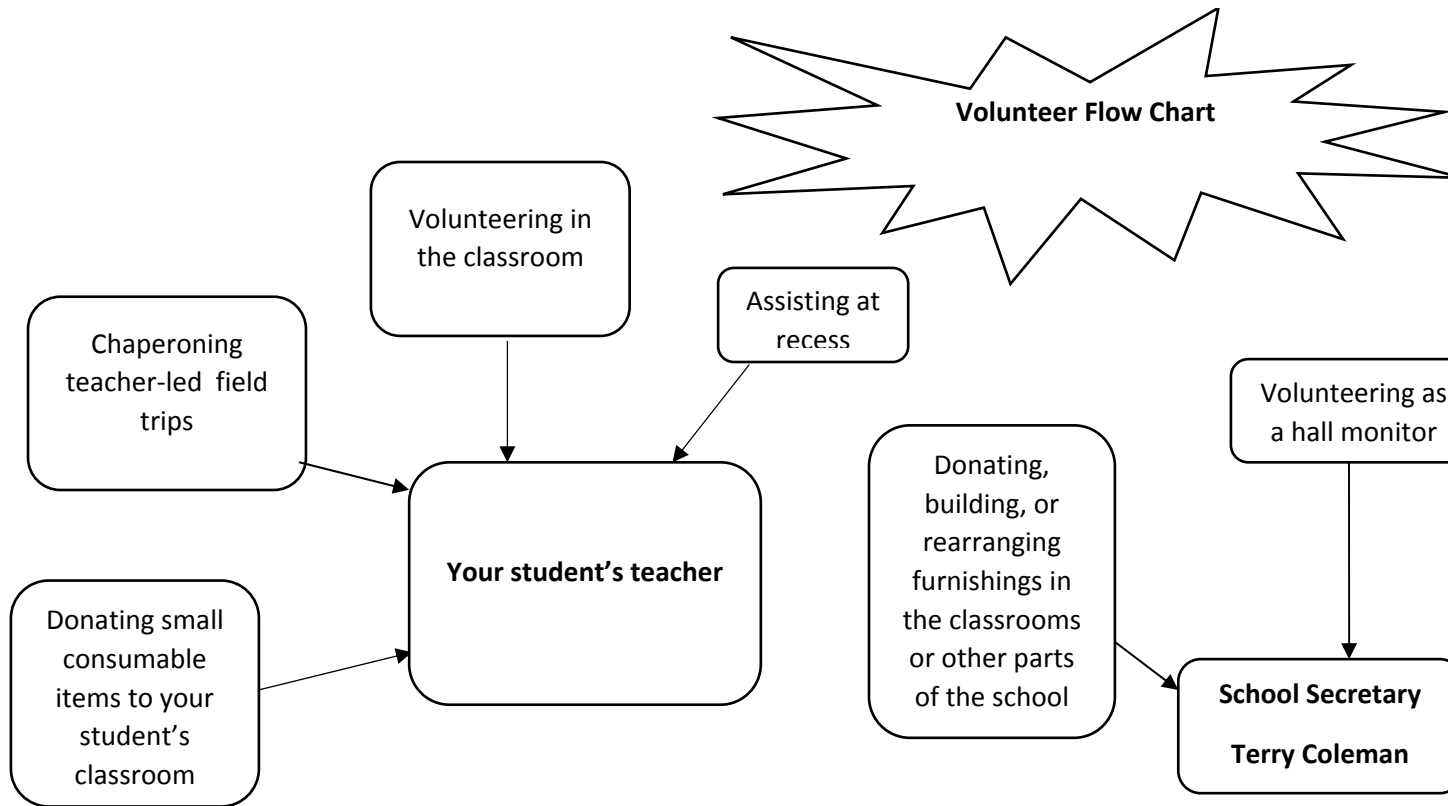
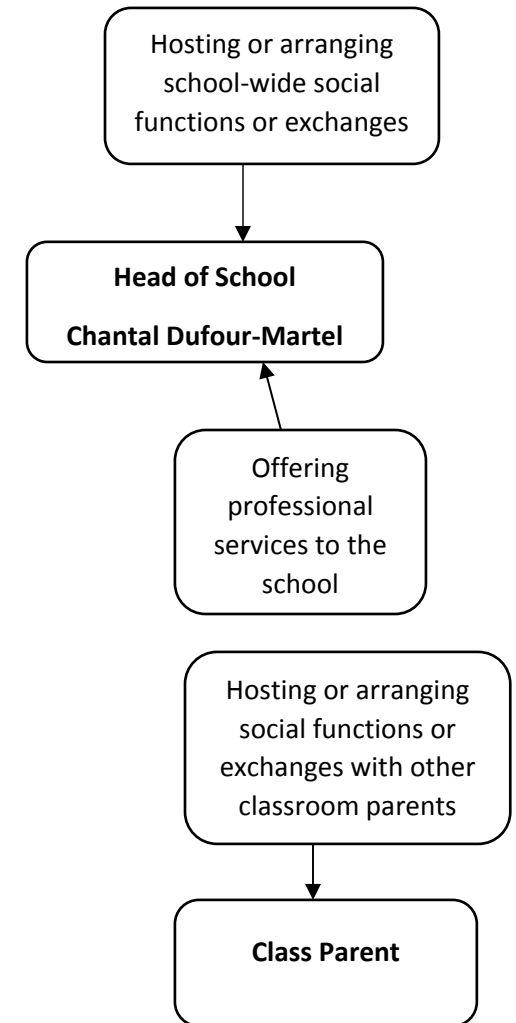


If you have any questions or concerns beyond what is outlined below, please speak to the school secretary



Fundraising: See fundraising chart

Other questions: see general questions flowchart



Head of School: chantal@lemondeimmersion.org

School Secretary: secretary@lemondeimmersion.org

All volunteers who work in the school with students present must be fingerprinted and background checked.

Please see the school secretary to begin this process, and expect it to take a few weeks.